

COME AND EXPERIENCE GOLD STANDARD
HOMES IN GHATKOPAR

A RESIDENCE
AS GOOD AS GOLD

THE VIEWS, ADANI REALTY, OFF EASTERN EXPRESS HIGHWAY, PANTNAGAR, GHATKOPAR EAST, MUMBAI - 400 075.

Disclaimer: The information and material contained in this brochure /marketing collateral are intended to supplement the information available on the website of MahaRERA and is not intended to be a substitute thereto. Any person who is considering/evaluating any apartment in the Project, are required to independently analyse, acquaint and familiarise themselves with the information and disclosures pertaining to the Project as uploaded on the website of MahaRERA. These printed material does not constitute an offer and / or contract of any type between the Developer and the recipient. All transactions in respect of this Project shall be subject to the terms and conditions of the agreement for sale entered between the Developer and the Purchaser.

The project has been registered under MahaRERA registration numbers P51900031165 for Tower A & B P51900033194 for Tower C & D (The Views II) and is available on the website <https://maharera.mahaonline.gov.in> under registered projects. Images are for representational purpose only. The amenities are a part of Fitness Center as per approval from concerned authorities and to be operated and managed by Third Party. Plants, Furniture / fixtures in the layout and apartment are for representative purposes only. Views available for selected apartments. The proposed Metro Line/Future Development to be developed by concerned authority. The Project is funded by HDFC Bank. *T&C Apply. Date of Printing: July 2024.

To Know More, Call: 1800 108 0009 | Website: www.adaniirealty.com

The Views-I



Rera No.: P51900031165

The Views-II



Rera No.: P51900033194

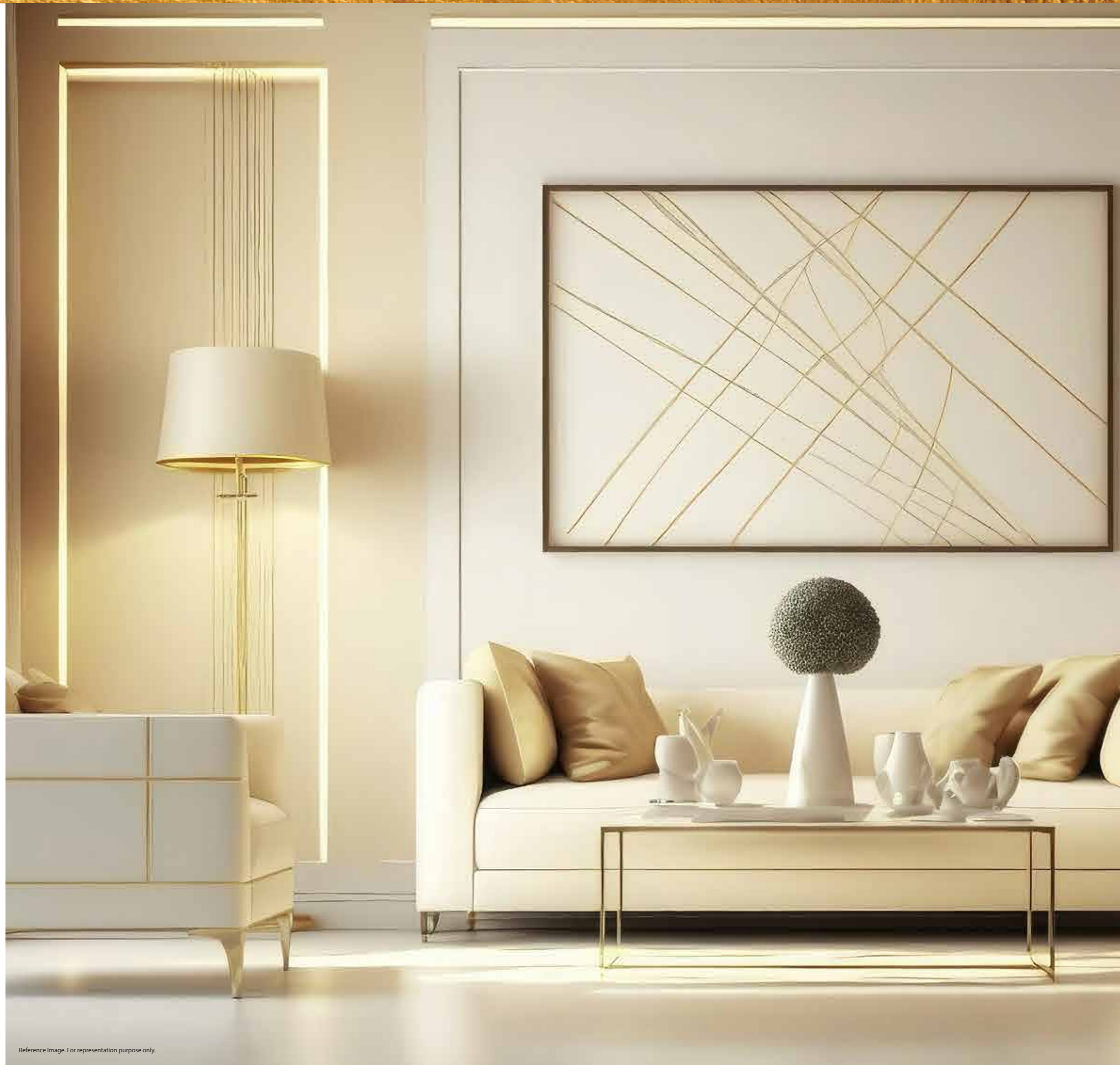
Reference Image. For representation purpose only.

Reference Image. For representation purpose only.









UNVEILING, GOLD STANDARD HOMES IN GHATKOPAR

Experience the Gold Standard in living designed with international appeal, offering the perfect blend of comfort and contemporary style. Indulge in unparalleled amenities and a vibrant location, all crafted to give you an uncompromising living experience.



NAVIGATE YOUR WAY TO LUXURY

-  Upcoming Metro Station
-  Retails
-  Hospitals
-  Ghatkopar Railway Station
-  Schools
-  Derasar
-  Petrol Pumps
-  Banks
-  Business Centre
-  Government Quarters
-  Garden
-  Restaurants
-  Airport

SCHOOLS

- ▶ The Universal School 1.8 Kms
- ▶ Garodia International School 1.5 Kms

Malls

- ▶ R City Mall 3.1 Kms
- ▶ Phoenix Market City 4.3 Kms

Hotels

- ▶ Taj Mahal Palace (Vikhroli) 2.5 Kms
- ▶ IBIS (Vikhroli) 8.0 Kms

Hospitals

- ▶ Zynova Shalby Hospital 2.6 Kms
- ▶ Sarvodaya Hospital 2.6 Kms



Image for representation purpose only. Proposed/Upcoming development of Metro Lines and infrastructure facilities are indicative and to be developed by the appropriate authority. Map not to scale. Distance calculated as per google maps from views site under normal traffic condition.



Precious

Genuine

Magnificent

Rare

Timeless

All that glitters is Gold



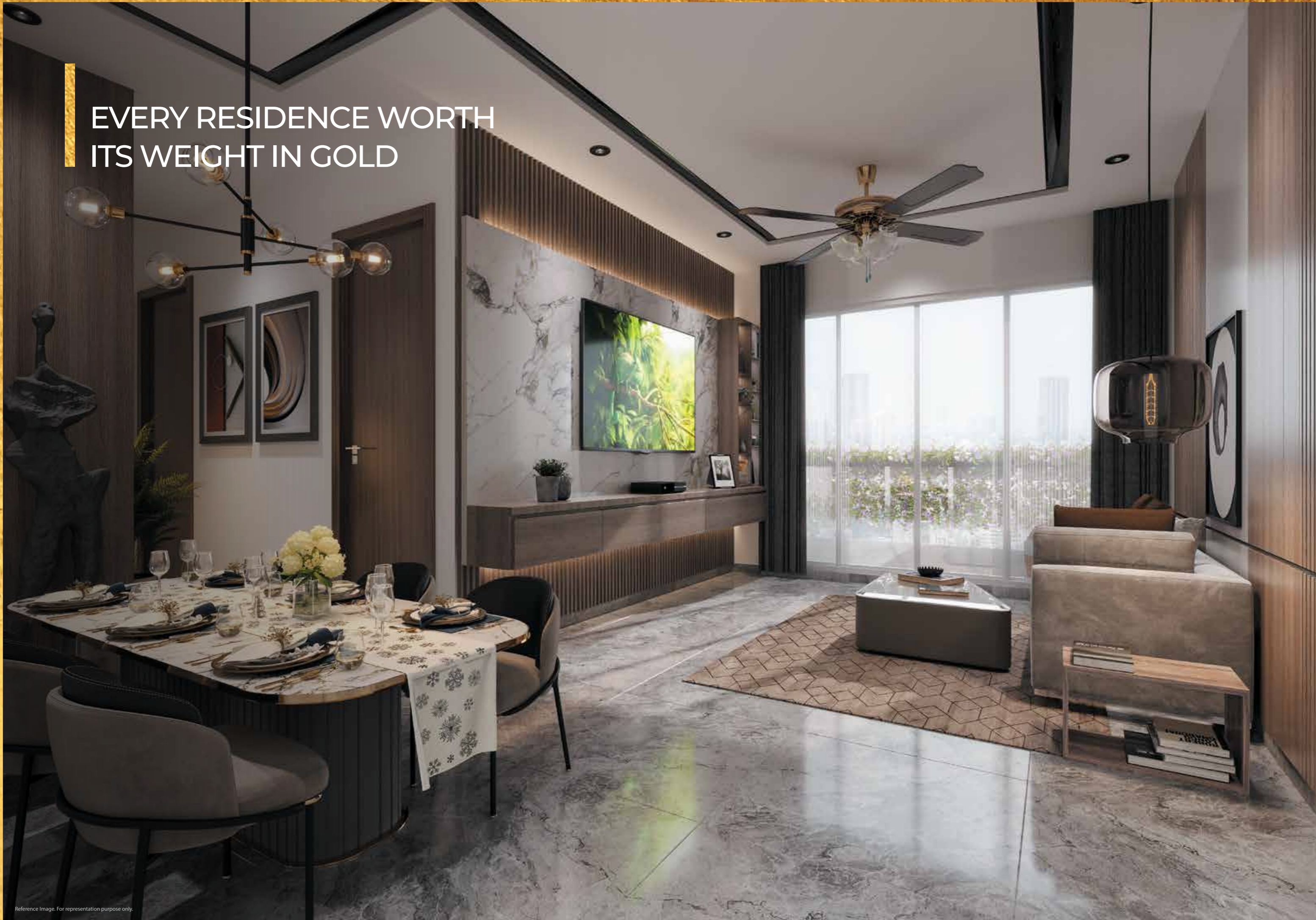
**FIND YOUR WAY
TOWARDS THE GOLD
STANDARD OF LIVING**

WELCOME TO THE GOLDEN AGE OF LIVING

Gold Standard Homes at The Views transcend mere location. Nestled in the heart of Ghatkopar East, close to the Eastern Expressway, it's a sanctuary designed for those who have cultivated a discerning taste. Here, amidst the city's embrace, you'll discover not just exquisite residences, but an unparalleled standard of luxury living. Seamlessly connected, The Views grants you effortless access to upscale destinations, esteemed institutions, and vibrant entertainment. Experience a life curated to perfection, where serenity meets sophistication, and every detail elevates you to a world beyond the ordinary. This is the Gold Standard of living.



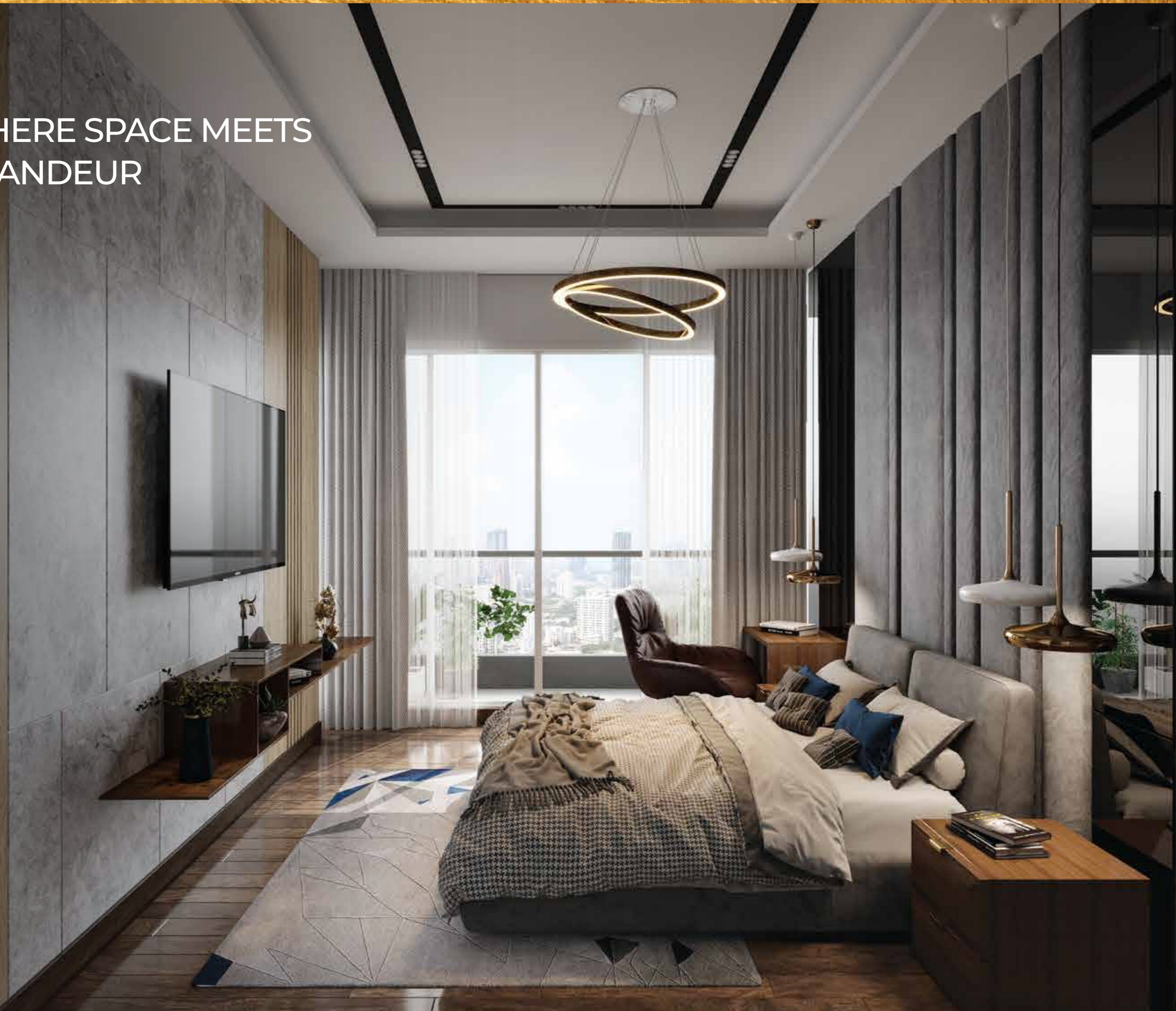
EVERY RESIDENCE WORTH
ITS WEIGHT IN GOLD



WHERE FAMILY MEMORIES ARE
MADE OF GOLD



WHERE SPACE MEETS
GRANDEUR



LIVE THE GOLD LIFE
AT THE VIEWS





Gold mine of views

Views of the mangroves.
Panoramic views of the city.
Gold Standard Homes



OUTSTANDING SOUTHERN VIEWS OF PANT NAGAR

The images of public places are included in the printed material so that the prospective buyer gets a fair idea of the landscape in and around the general macro region of the project.

Actual Drone Image from a height of 200 ft. Available for select units.



SCENIC BACKDROP OF THE WESTERN CITY SKYLINE

The images of public places are included in the printed material so that the prospective buyer gets a fair idea of the landscape in and around the general macro region of the project.

Actual Drone Image from a height of 400 ft.

CAPTURING THE BEAUTY
OF THE EASTERN MANGROVES



The images of public places are included in the printed material so that the prospective buyer gets a fair idea of the landscape in and around the general macro region of the project.

Actual Drone Image from a height of 200 ft.
Available for select units.

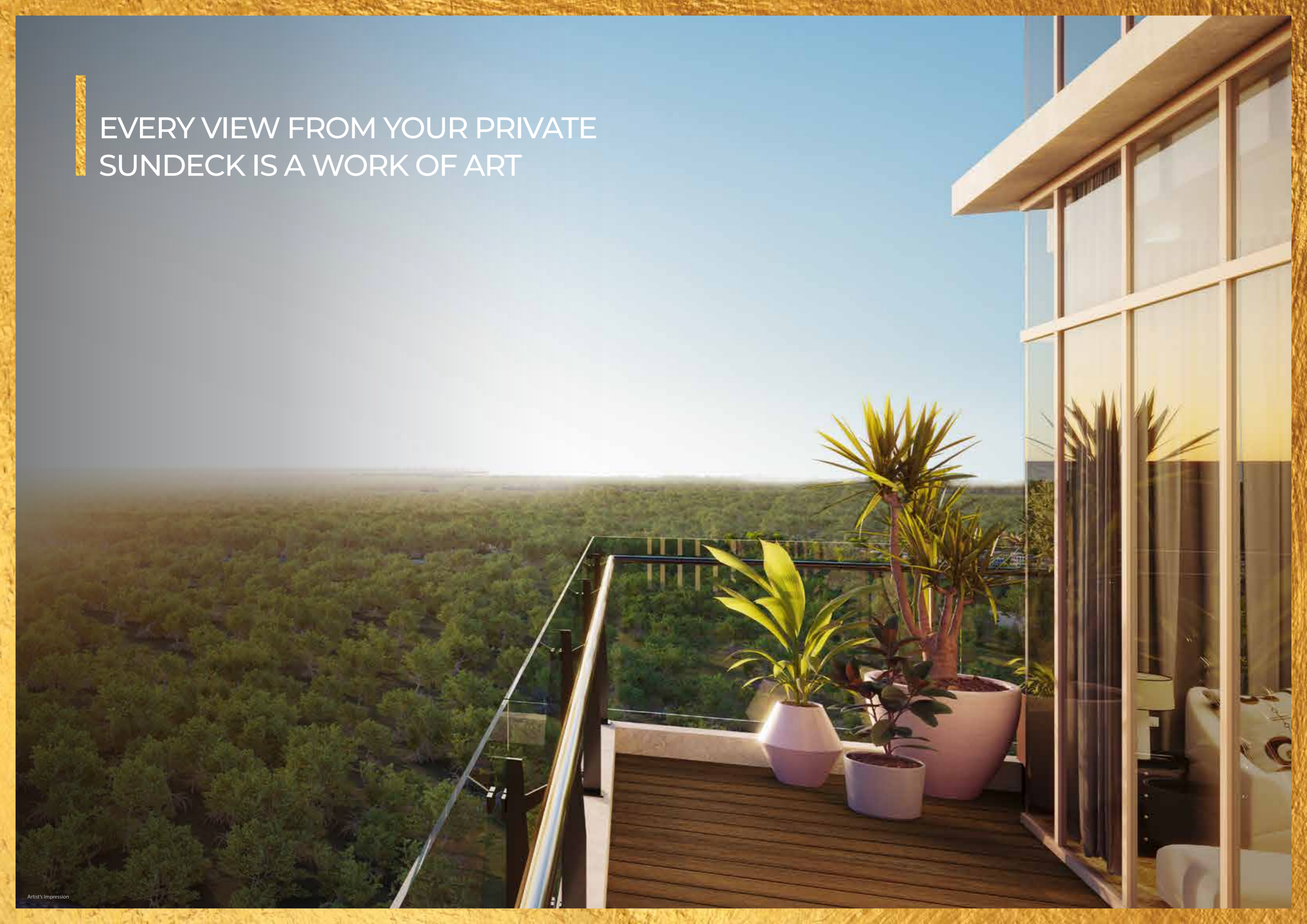
THE THRIVING VIKHROLI WITH
A NORTHERN VIEWPOINT



The images of public places are included in the printed material so that the prospective buyer gets a fair idea of the landscape in and around the general macro region of the project.

Actual Drone Image from a height of 400 ft.

EVERY VIEW FROM YOUR PRIVATE
SUNDECK IS A WORK OF ART



BEYOND THE HORIZON
LIES FOREVER



AN ICON OF
ARCHITECTURAL
BRILLIANCE



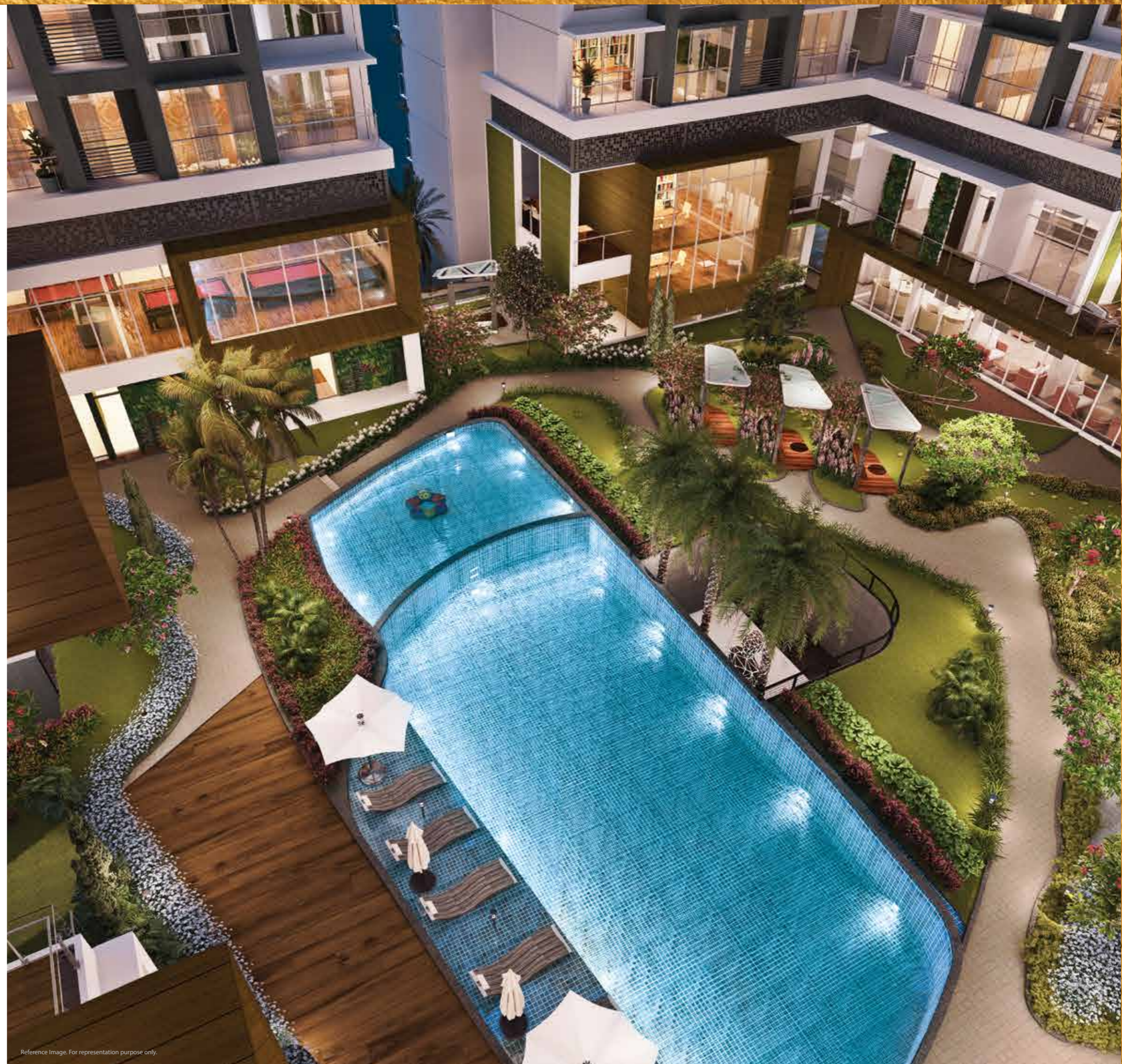


The big celebrations.
The small joys.
The sweet moments
**The Gold Standard of
celebrations**





**Dive into relaxation
with aquatic delights**



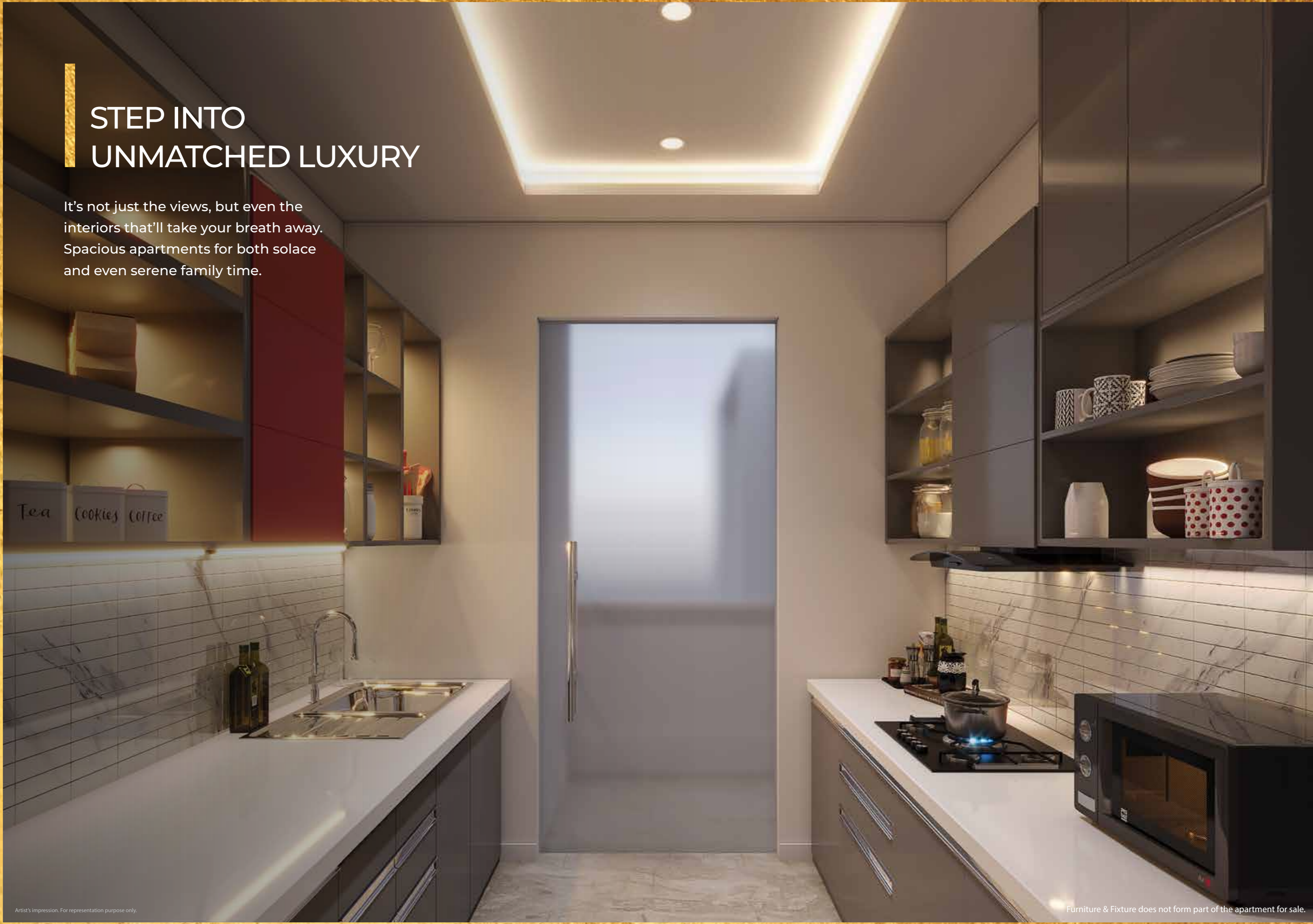
CONNECT WITH GREAT DESIGN

Design is an integral part of any home. To make living an enjoyable and memorable experience, every feature is designed for abundant natural sunlight, optimal space usage, and sustainable design.



STEP INTO UNMATCHED LUXURY

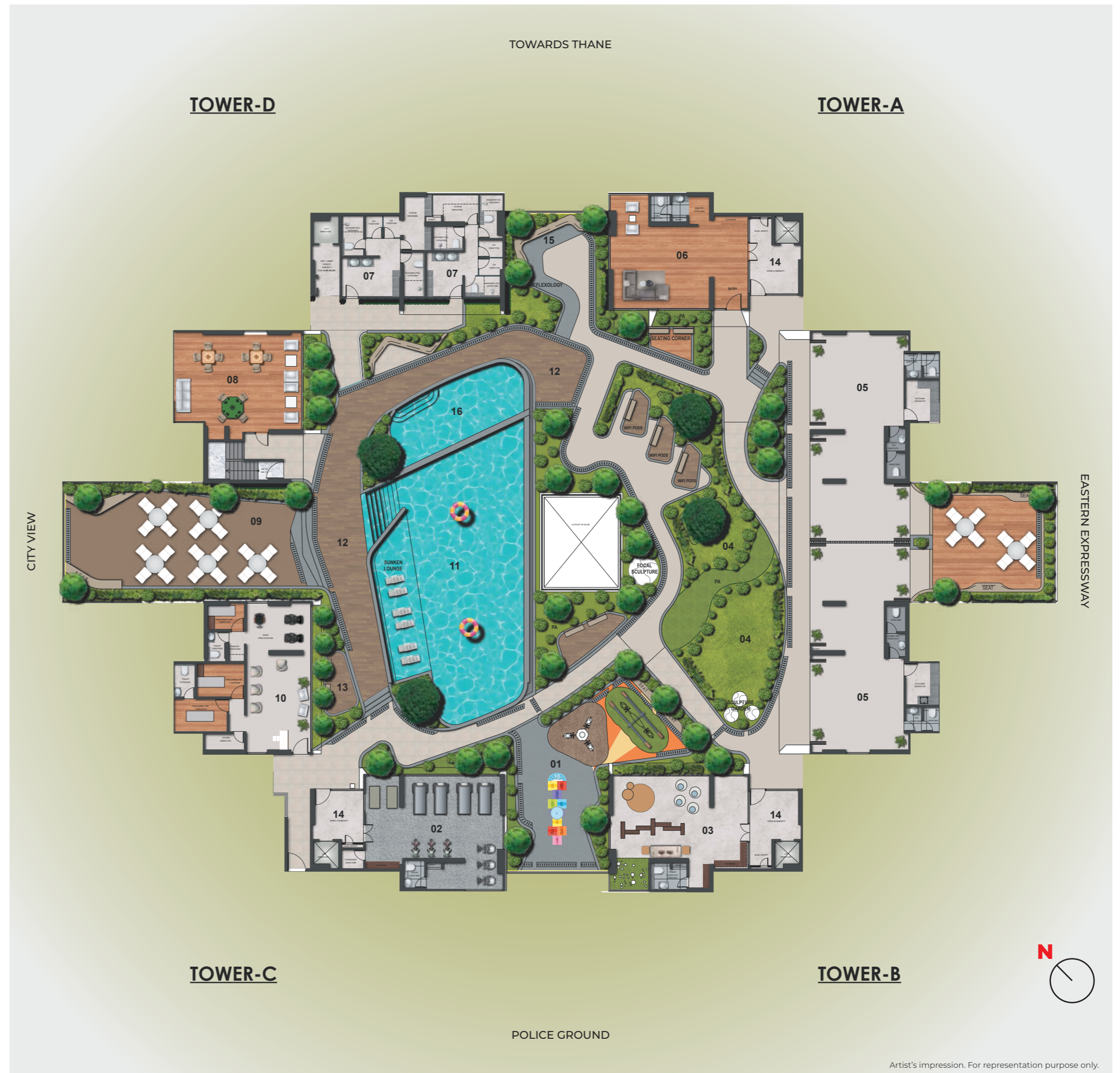
It's not just the views, but even the interiors that'll take your breath away. Spacious apartments for both solace and even serene family time.



PODIUM PLAN
1ST FLOOR

LEGEND

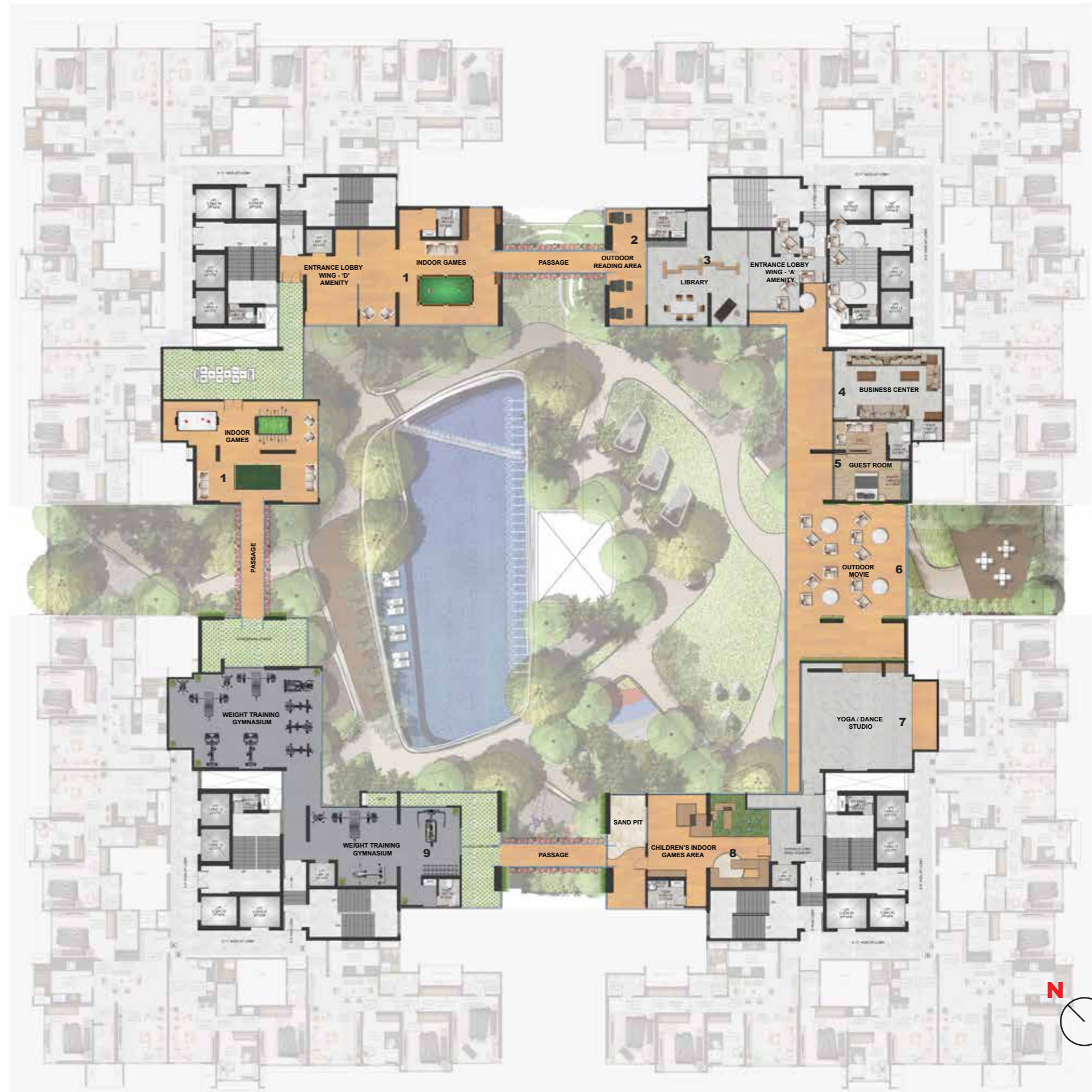
- 1 CHILDREN'S PLAY AREA
- 2 CARDIO GYM + FLOOR EXERCISE
- 3 TODDLER'S PLAY AREA
- 4 OPEN LAWN
- 5 MULTI-PURPOSE HALL
- 6 GHAR DERASAR
- 7 POOL AMENITIES
- 8 BOARD GAMES
- 9 OUTDOOR DINING AREA
- 10 UNISEX SALON
- 11 LAP POOL
- 12 POOL DECK
- 13 SEATING DECK
- 14 ENTRANCE LOBBIES
- 15 SENIOR CITIZEN CORNER
- 16 KIDS POOL



PODIUM PLAN
2ND FLOOR

LEGEND

- 1 INDOOR GAMES
- 2 OUTDOOR READING AREA
- 3 LIBRARY
- 4 BUSINESS CENTRE
- 5 GUEST ROOM
- 6 OUTDOOR MOVIE
- 7 YOGA/DANCE STUDIO
- 8 CHILDREN'S INDOOR GAME AREA
- 9 WEIGHT TRAINING GYMNASIUM



TERRACE FLOOR

LEGEND

- 1 KID'S ACTIVITY AREA
- 2 JOGGING TRACK
- 3 OUTDOOR FITNESS ARENA
- 4 SEATING ALCOVES
- 5 MEDITATION DECK
- 6 YOGA DECK
- 7 SEATING DECK
- 8 HOPSCOTCH AREA
- 9 DINNING AREA
- 10 BARBECUE AREA
- 11 KIDS PLAY AREA
- 12 WALKING PATHWAY
- 13 REFLEXOLOGY PATHWAY
- 14 SENIOR CITIZEN CORNER
- 15 PARTY LAWN
- 16 AMPHITHEATER



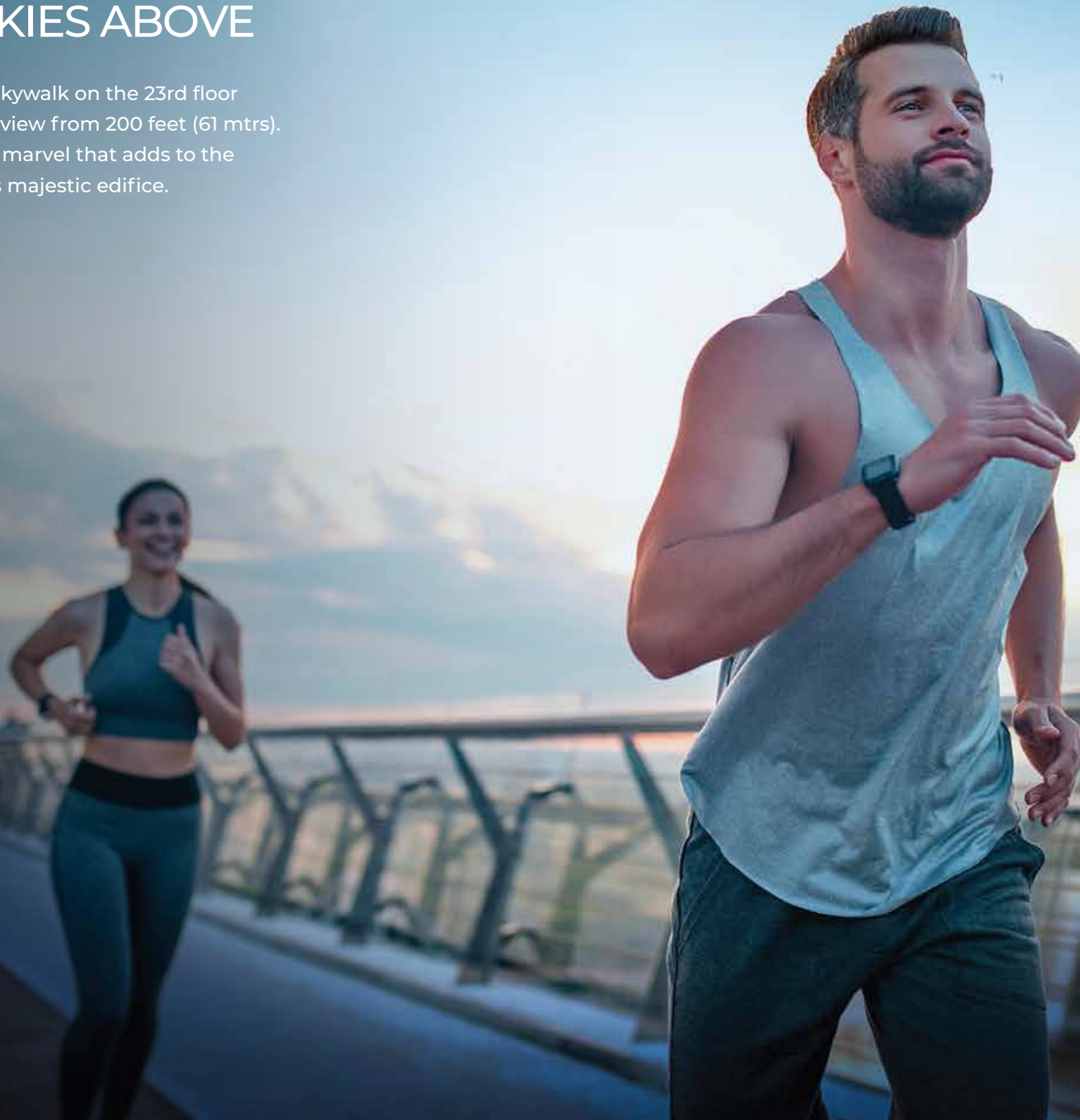
CONNECT WITH LIMITLESS LUXURY

We all love to be pampered. At The Views, you'll be spoiled for luxury with an assortment of amenities that meet the tastes of every resident. Dive into the pool or walk 200 feet into the clouds. The Views has every possible amenity to indulge you. It's definitely a lifestyle that's worth it.



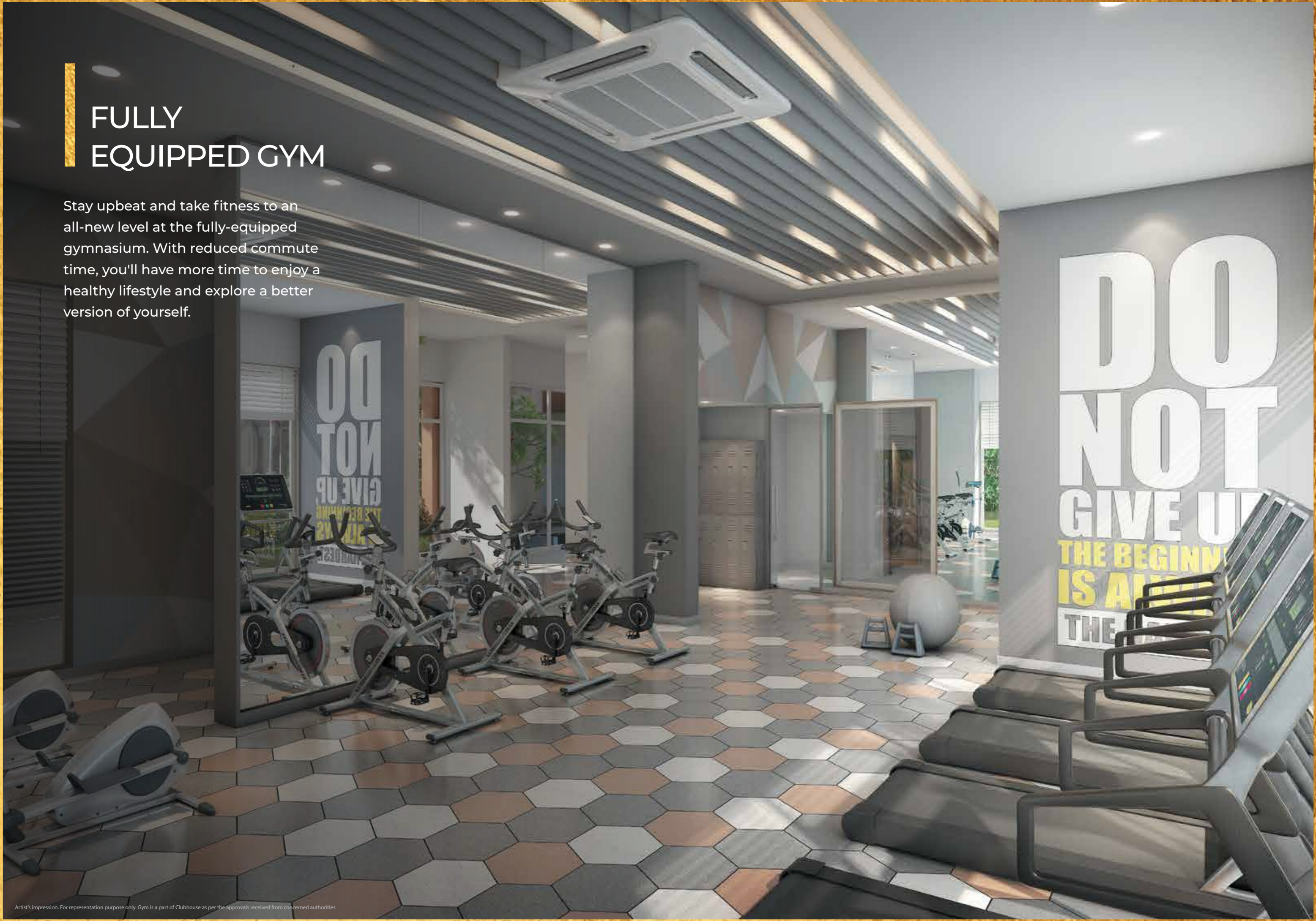
CONNECT WITH THE SKIES ABOVE

Experience the Skywalk on the 23rd floor as you enjoy the view from 200 feet (61 mtrs). A unique design marvel that adds to the aesthetics of this majestic edifice.



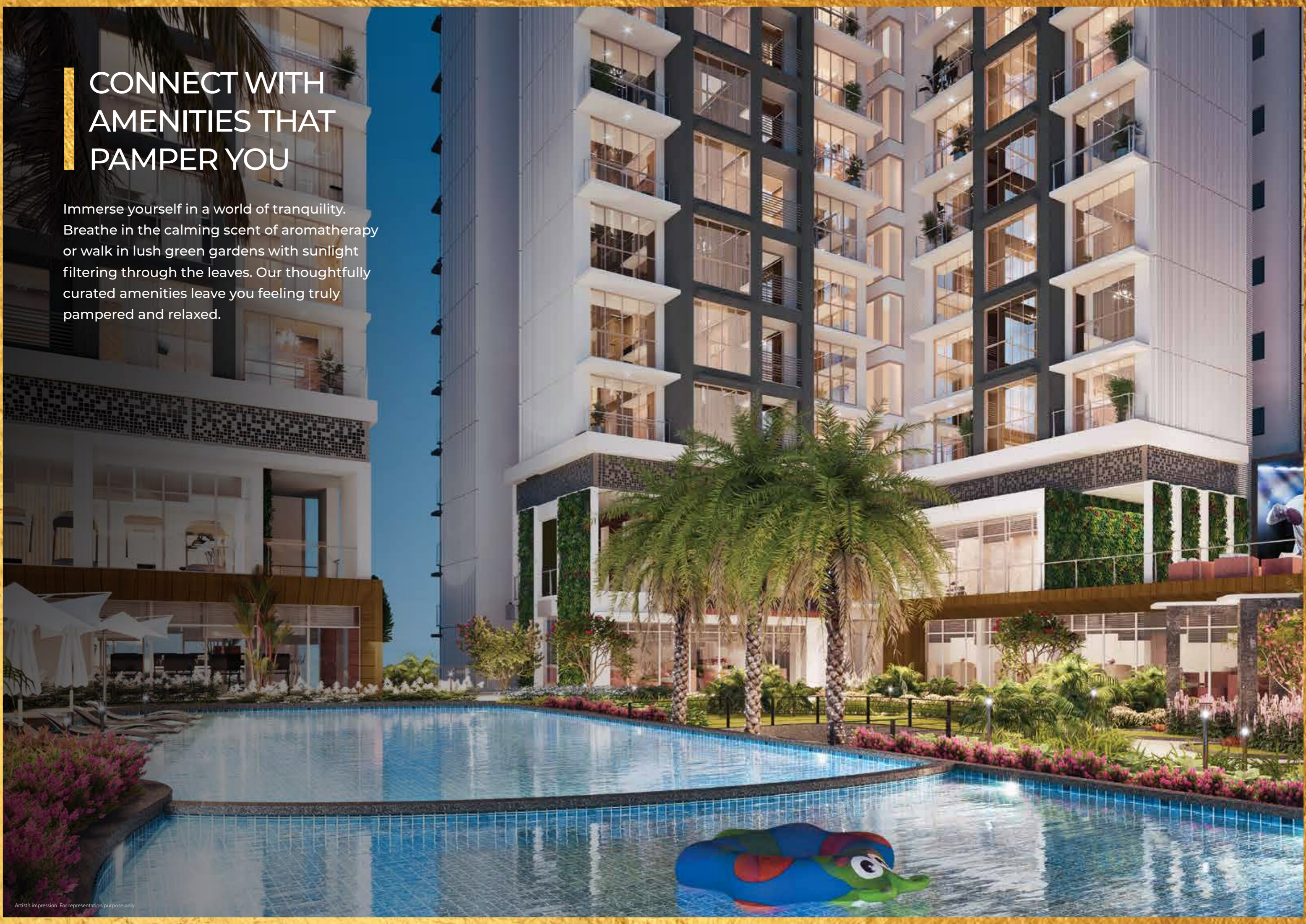
FULLY EQUIPPED GYM

Stay upbeat and take fitness to an all-new level at the fully-equipped gymnasium. With reduced commute time, you'll have more time to enjoy a healthy lifestyle and explore a better version of yourself.



CONNECT WITH AMENITIES THAT PAMPER YOU

Immerse yourself in a world of tranquility. Breathe in the calming scent of aromatherapy or walk in lush green gardens with sunlight filtering through the leaves. Our thoughtfully curated amenities leave you feeling truly pampered and relaxed.



AMENITIES

FITNESS CENTRE

- Unisex Salon (Paid Service)
- Manicure & Pedicure (Paid Service)
- Clubhouse
- Gymnasium
- Senior Citizen Corner
- Dedicated Children's Indoor Games Area
- Toddler Play Area
- Health Club
- Shower & Changing Facilities
- Jungle Gym for Toddlers
- Jogging Area
- Library + Outdoor Reading Area
- Board Game
- Yoga / Meditation / Dance Centre
- Indoor Games

- Multipurpose / Banquet Hall
- Party Lawn
- Cards & Billiard Table
- Business Center
- Poolside Seating

ADDITIONAL AMENITIES

- The Walk @ 23rd Level
- Ample Parking Spaces
- Grand Lobby
- Vaastu Compliant Homes
- Outdoor Movie Area
- Landscaping Area
- Electric Car Charging Area/Provision



Unisex Salon*
*Paid Service

* Image for representation purposes only. Provisions for the amenity space provided by Developer. To be operated, managed and maintained by Society / 3rd Party. Image for representation purpose only.



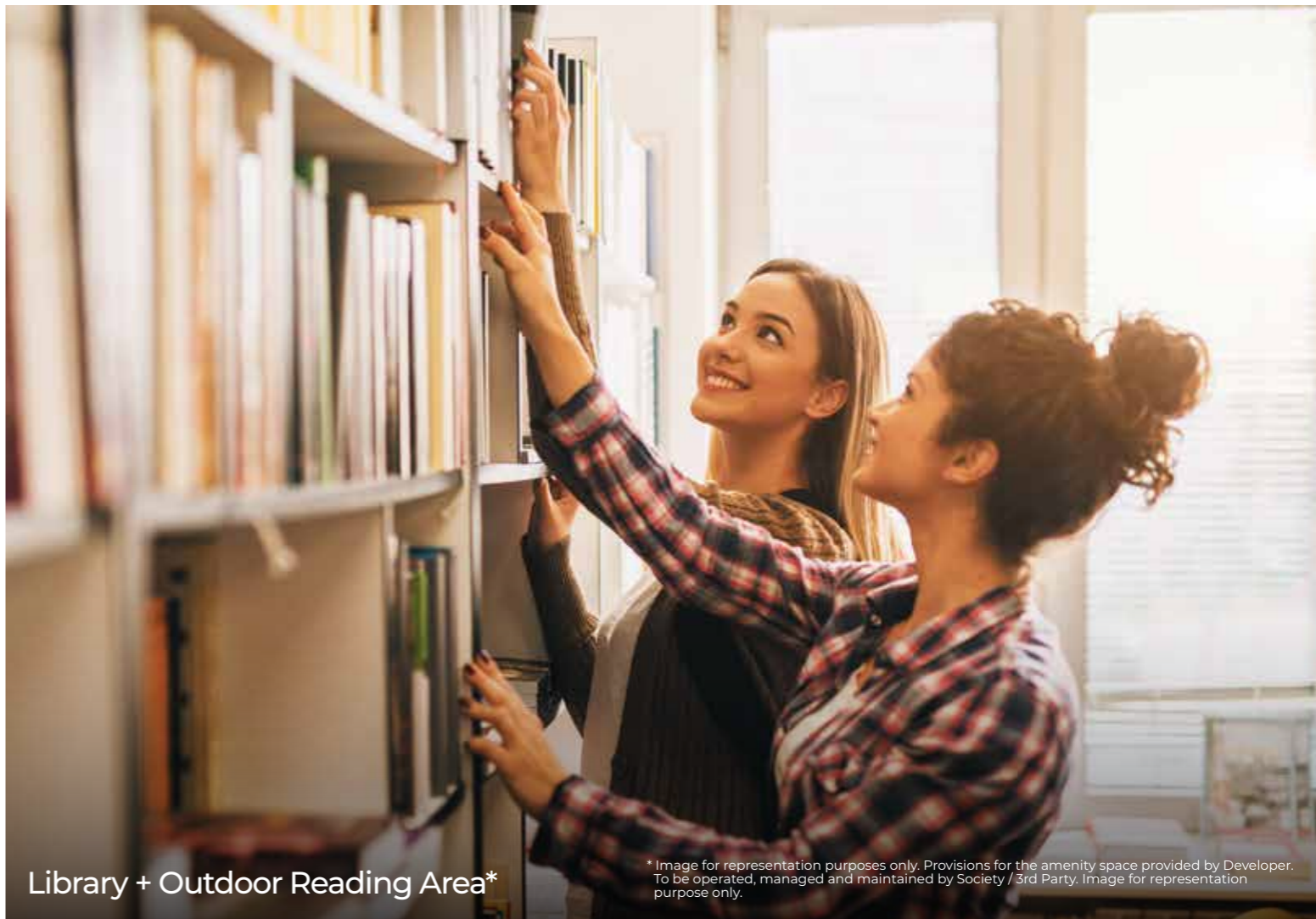
Manicure & Pedicure*
*Paid Service

* Image for representation purposes only. Provisions for the amenity space provided by Developer. To be operated, managed and maintained by Society / 3rd Party. Image for representation purpose only.



Toddler Play Area*

Image for representation purpose only.



Library + Outdoor Reading Area*

* Image for representation purposes only. Provisions for the amenity space provided by Developer. To be operated, managed and maintained by Society / 3rd Party. Image for representation purpose only.



Jungle Gym for Toddlers*

Image for representation purpose only.



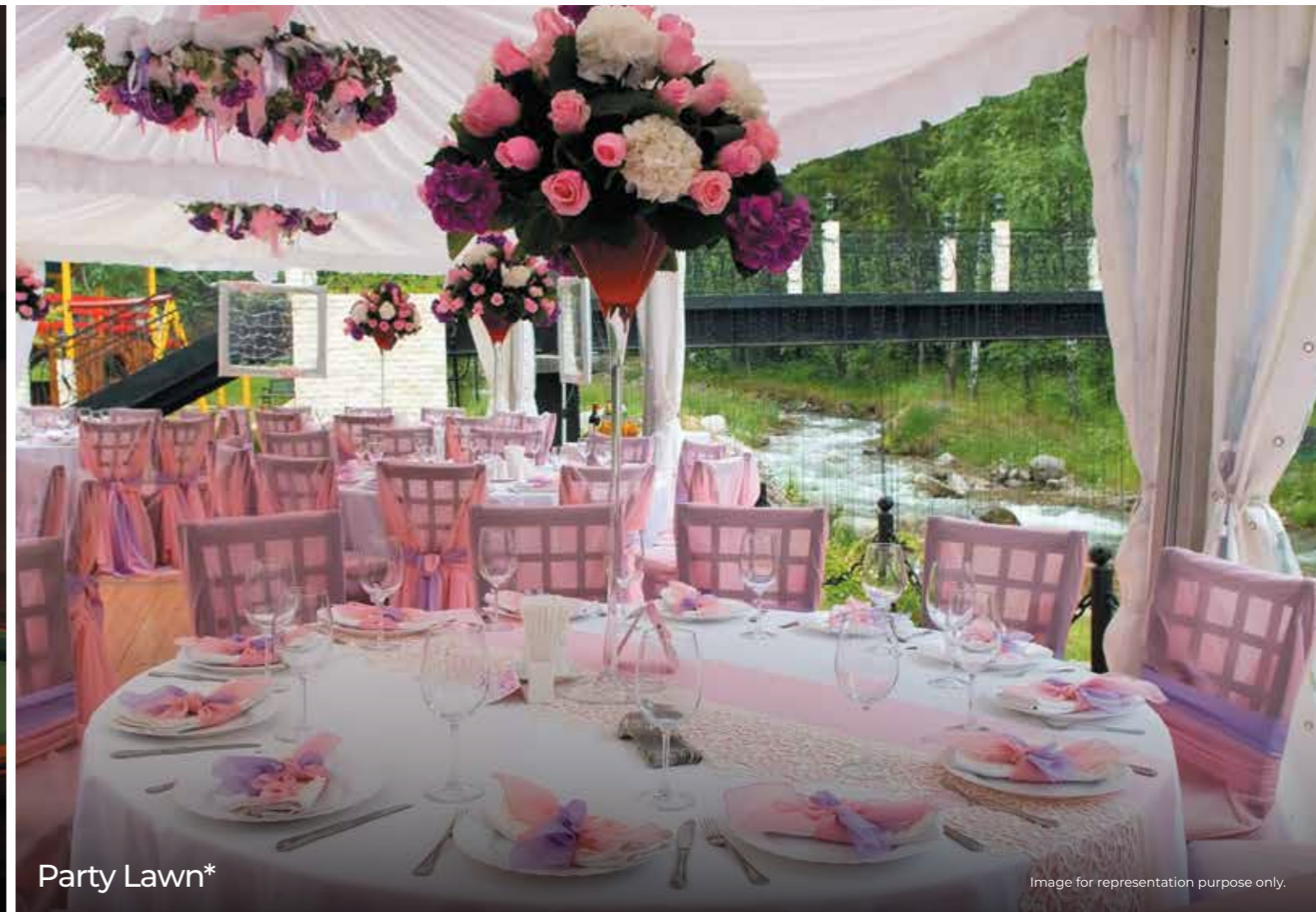
Yoga / Meditation / Dance Centre*

Image for representation purpose only.



Cards & Billiard Table*

Image for representation purpose only.



Party Lawn*

Image for representation purpose only.



Business Centre with Guest Room*

* Image for representation purposes only. Provisions for the amenity space provided by Developer. To be operated, managed and maintained by Society / 3rd Party. Image for representation purpose only.



Ample Parking Spaces*

Image for representation purpose only.



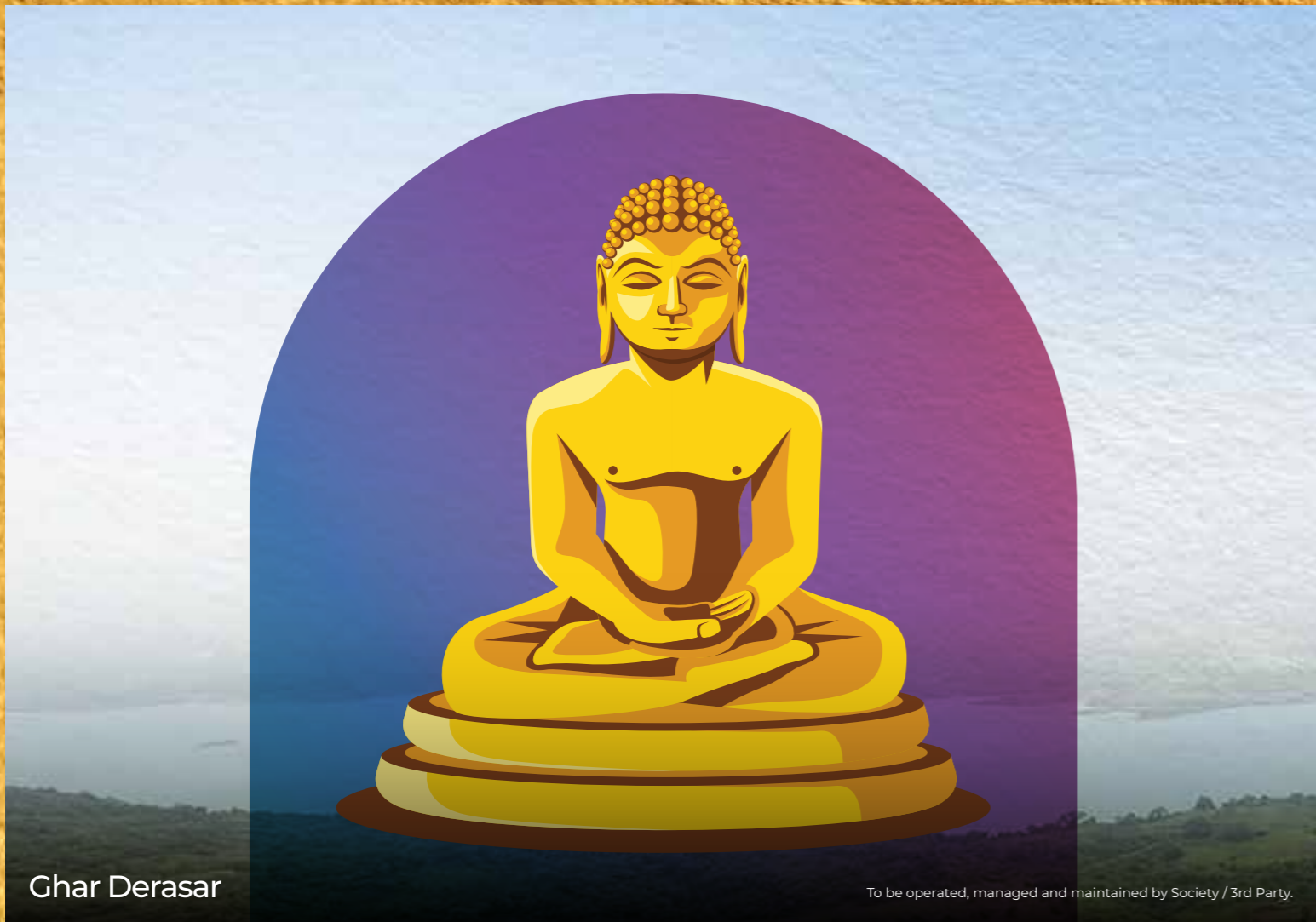
Vastu Compliant Homes*

Image for representation purpose only.



Outdoor Movie Area*

Image for representation purpose only.



Char Derasar

To be operated, managed and maintained by Society / 3rd Party.



Multipurpose Hall

Reference Image. For representation purpose only. Provisions for the amenity space provided by Developer. To be operated, managed and maintained by Society / 3rd Party.



Board Games

Reference Image. For representation purpose only.



Meditation Deck

Image for representation purpose only.



Seating Area

Image for representation purpose only.



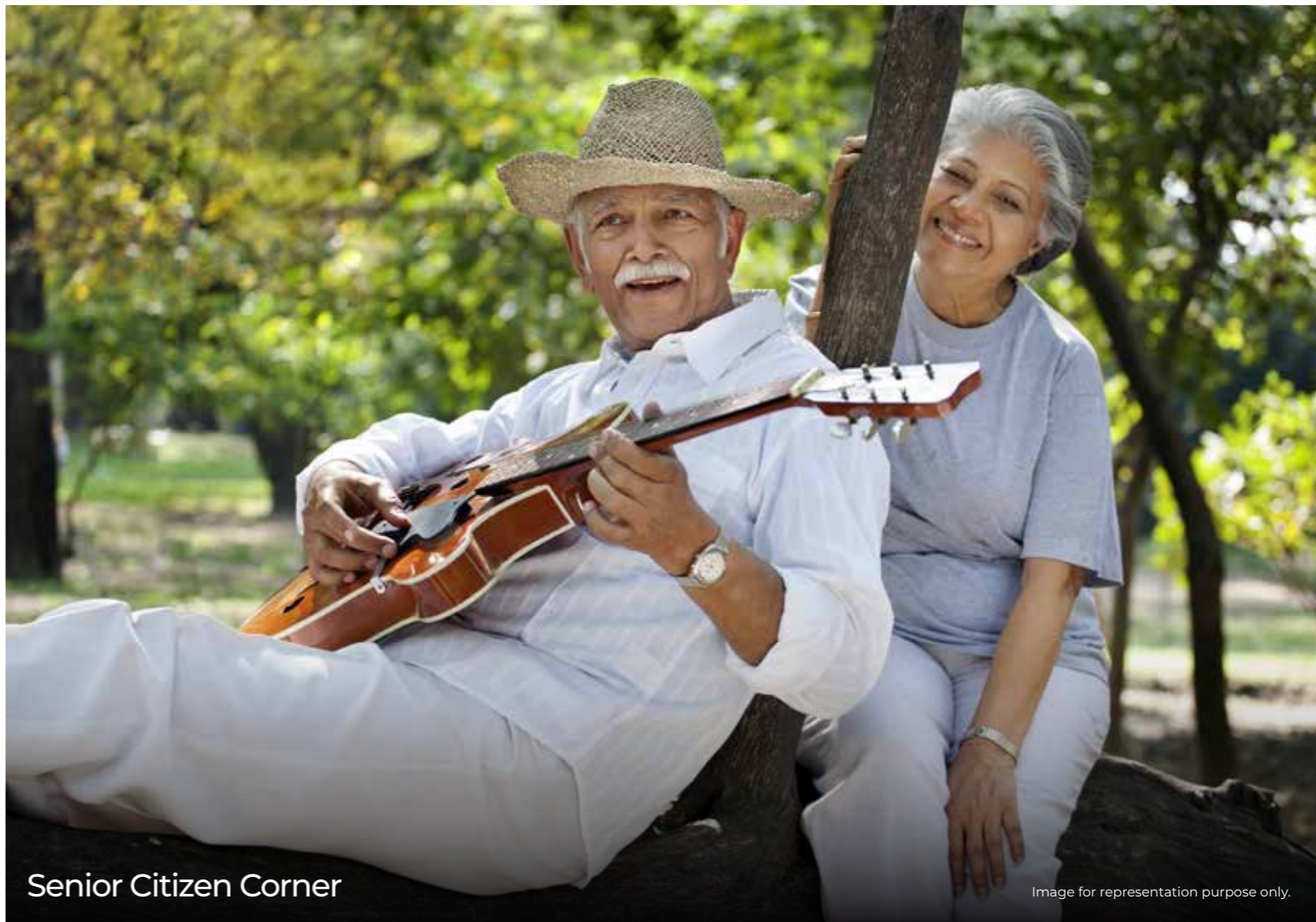
Reflexology Pathway

Image for representation purpose only.



Barbecue Area

Image for representation purpose only.



Senior Citizen Corner

Image for representation purpose only.

CONNECT WITH IMPECCABLE DESIGN

- Vitrified Tiles For The Living Room, Kitchen, Dining Room And All Bedrooms
- Premium Vitrified Tiles Dado Up To 600 Mm Above The Kitchen Platform
- Matte Finish Premium Vitrified Tiles For Bathroom
- Premium CP Fittings & False Ceiling In Bathrooms
- Weatherproof Exterior Grade Texture Paint On The Balcony
- SS Glass Railing / MS Railing In Balcony