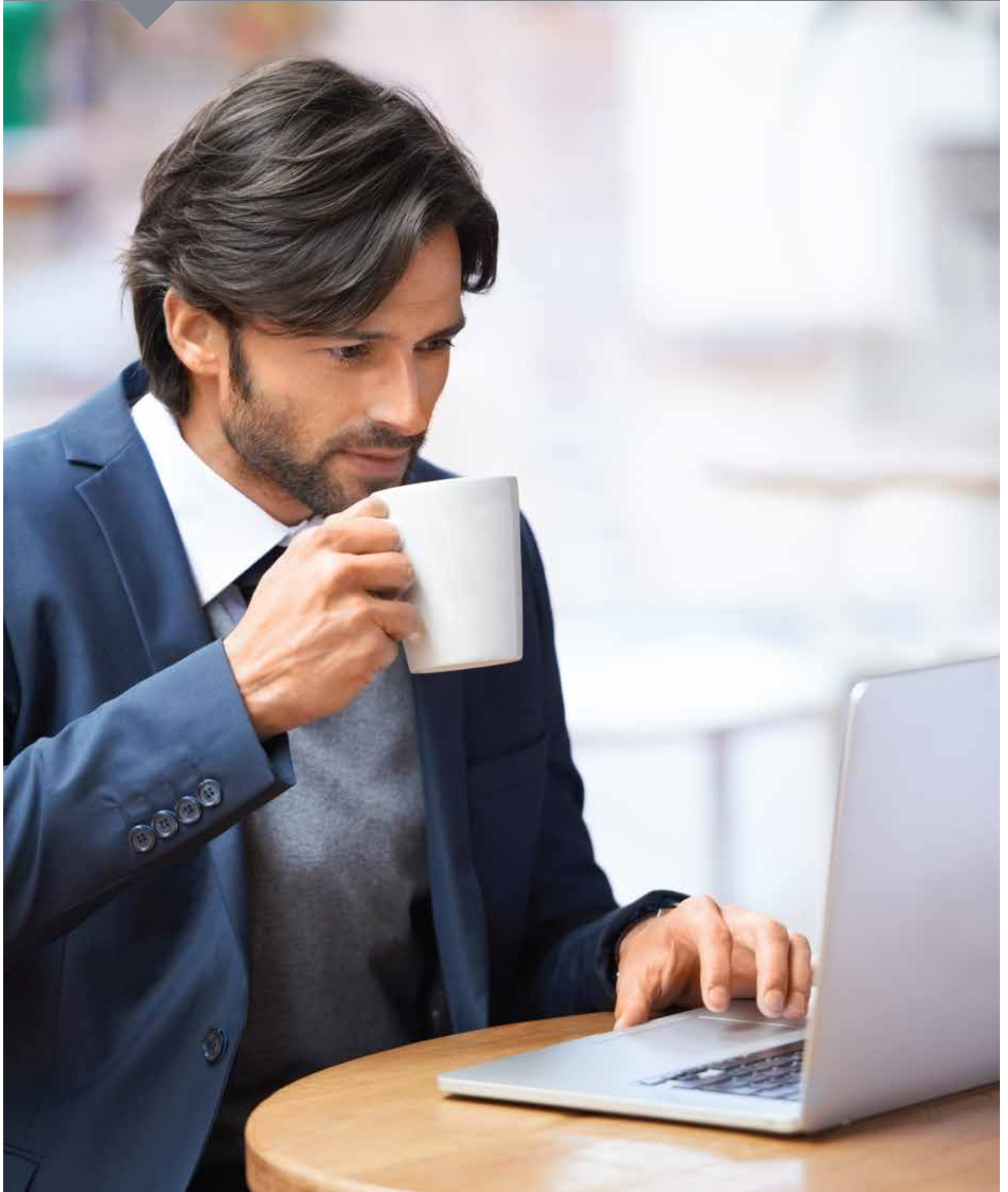


INSPIRE<sup>®</sup>  
————— BKC —————

Enjoying the morning  
coffee at the café

---



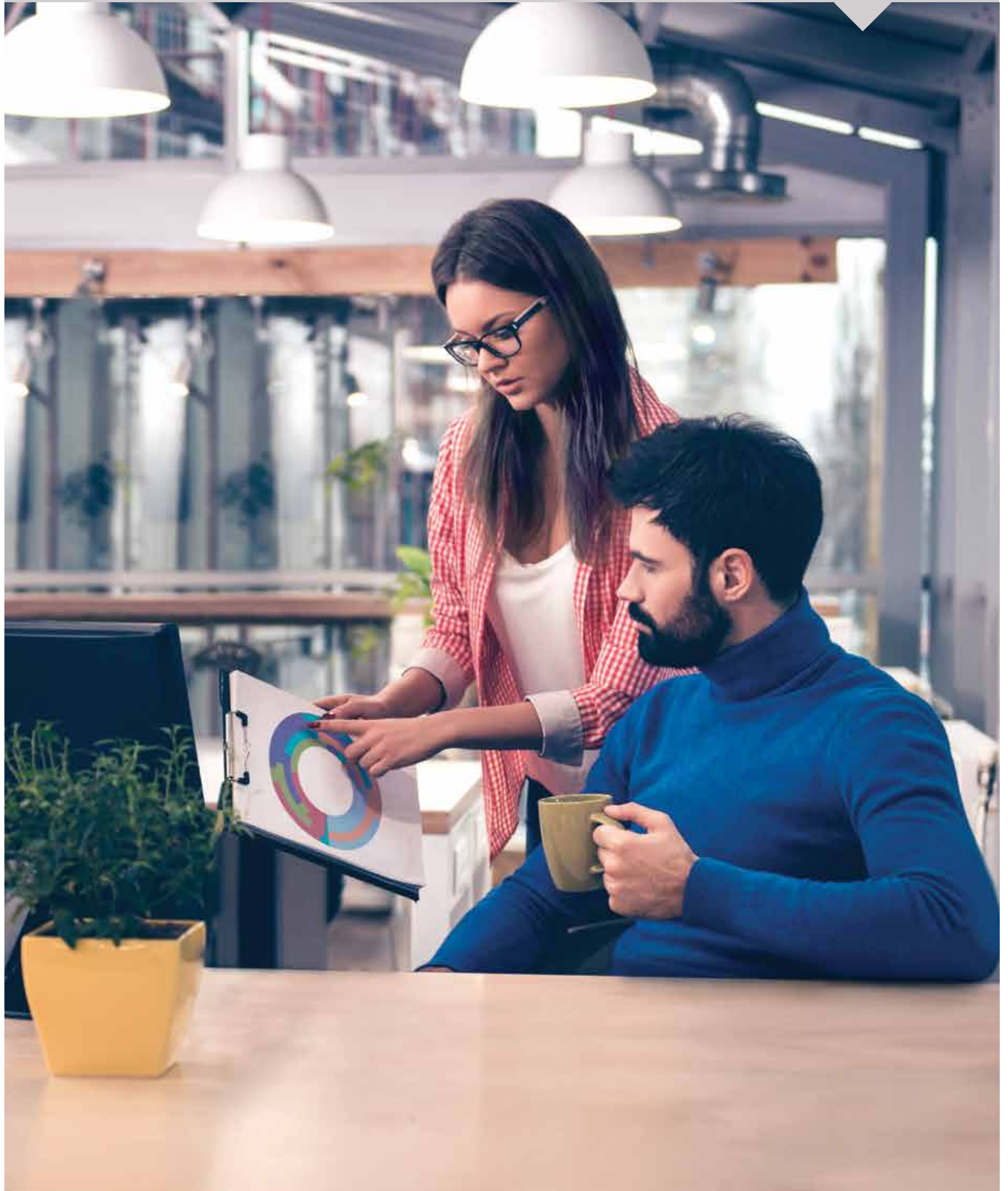


Dropping the kids  
at the Daycare Centre

---

Beginning the workday  
at the comfortable workspace

---





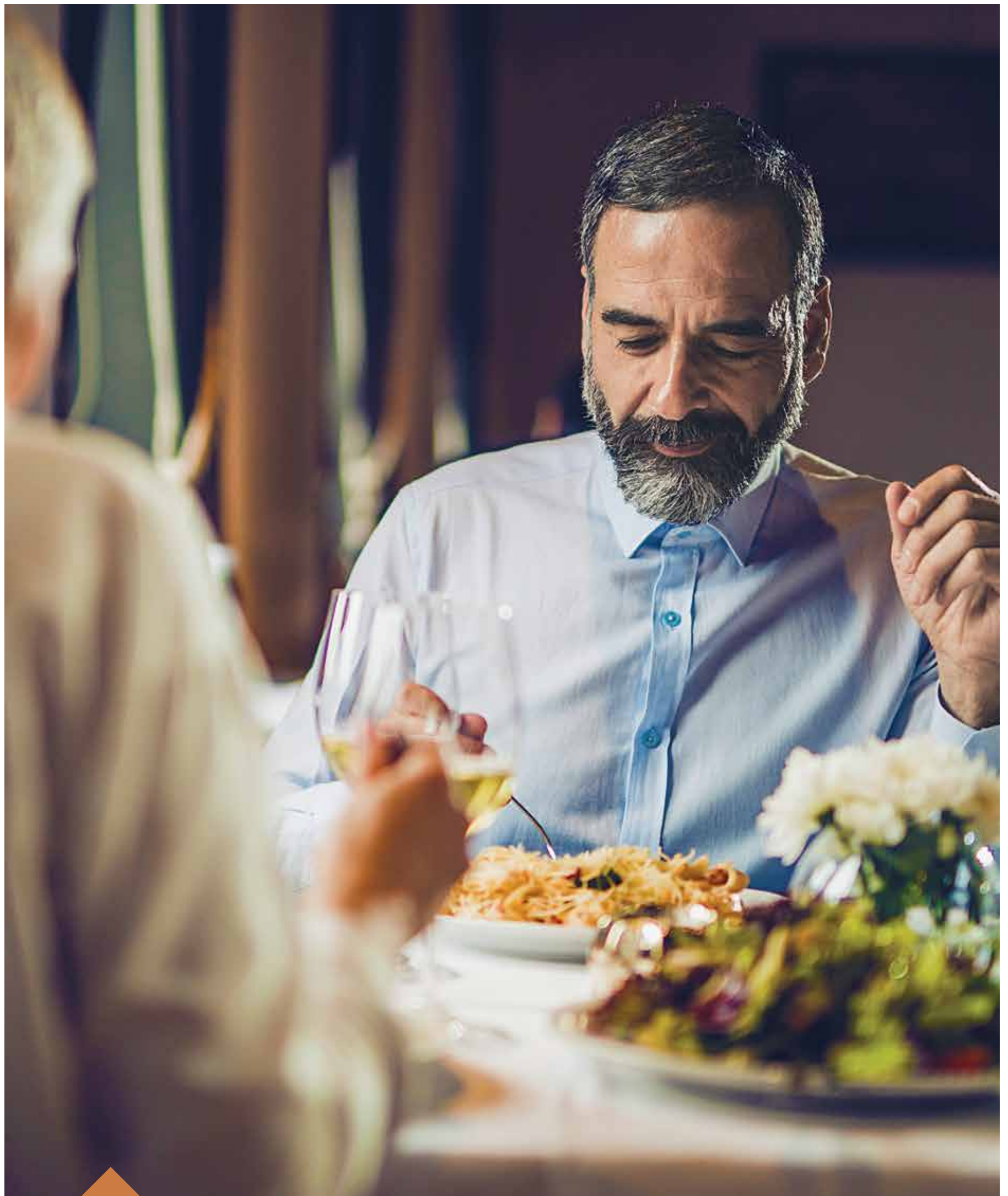
Attending a meeting  
at the Boardroom

---

Working out at the  
well-equipped Fitness Center

---





Relishing delicacies at  
The Fine Dining Arena

---

Imagine a workday  
where **business**  
and **leisure**  
blend perfectly



Presenting

INSPIRE<sup>®</sup>  
————— BKC —————

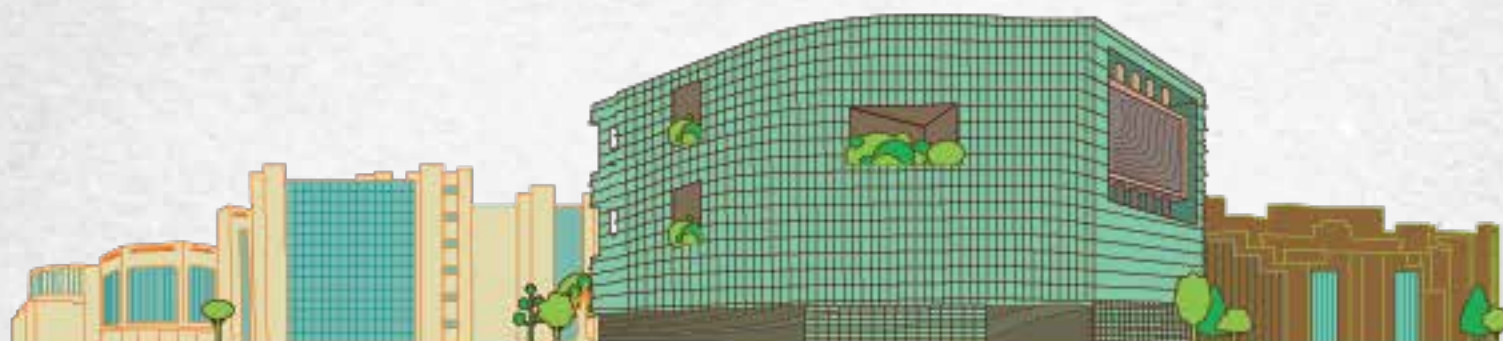
At Adani Realty, we are inspired by the new-age corporate lifestyle where work and life blend perfectly.

With Inspire BKC, we have created a workspace designed to make your every workday not only action-packed, but also leisure-packed.

# INSPIRE<sup>®</sup>

— BKC —





## Redefining Workspaces in Bandra-Kurla Complex

---

At Adani Realty, it's our endeavour to design workspaces that are modern and perfectly blend in the work and lifestyle trends of the aspiring Indian and global workforce. The awe-inspiring architecture, flexible workspaces and lifestyle features, all come together to make Inspire BKC the most sought-after business landmark in BKC.

## Expansive Building Area

---

A futuristic corporate vision deserves nothing less than a grand corporate space. Our enormous building area lends all the space in the world for your business to flourish and your people to be pampered like never before.



Actual Photograph

## Double-heighted Entrance Lobby

---

Make the first impression the everlasting one with our grand entrance lobby.



Actual Photograph



## IGBC Gold certification

---

The IGBC Gold certification is a testimony of our efforts in creating sustainable and nature-friendly workspaces.



Actual Photograph



## Flexible Office Spaces

---

Great business ideas don't fit in pre-fixed sizes. Your workspace at Inspire BKC is crafted to accommodate and anticipate the diverse growth needs of your business.



Actual Photograph

## Double-glazed Triple-layer Glass Façade

---

Combined with acoustic laminate film, it not only mitigates heat, but also reduces external sound pollution to provide cooler and calmer work environment.

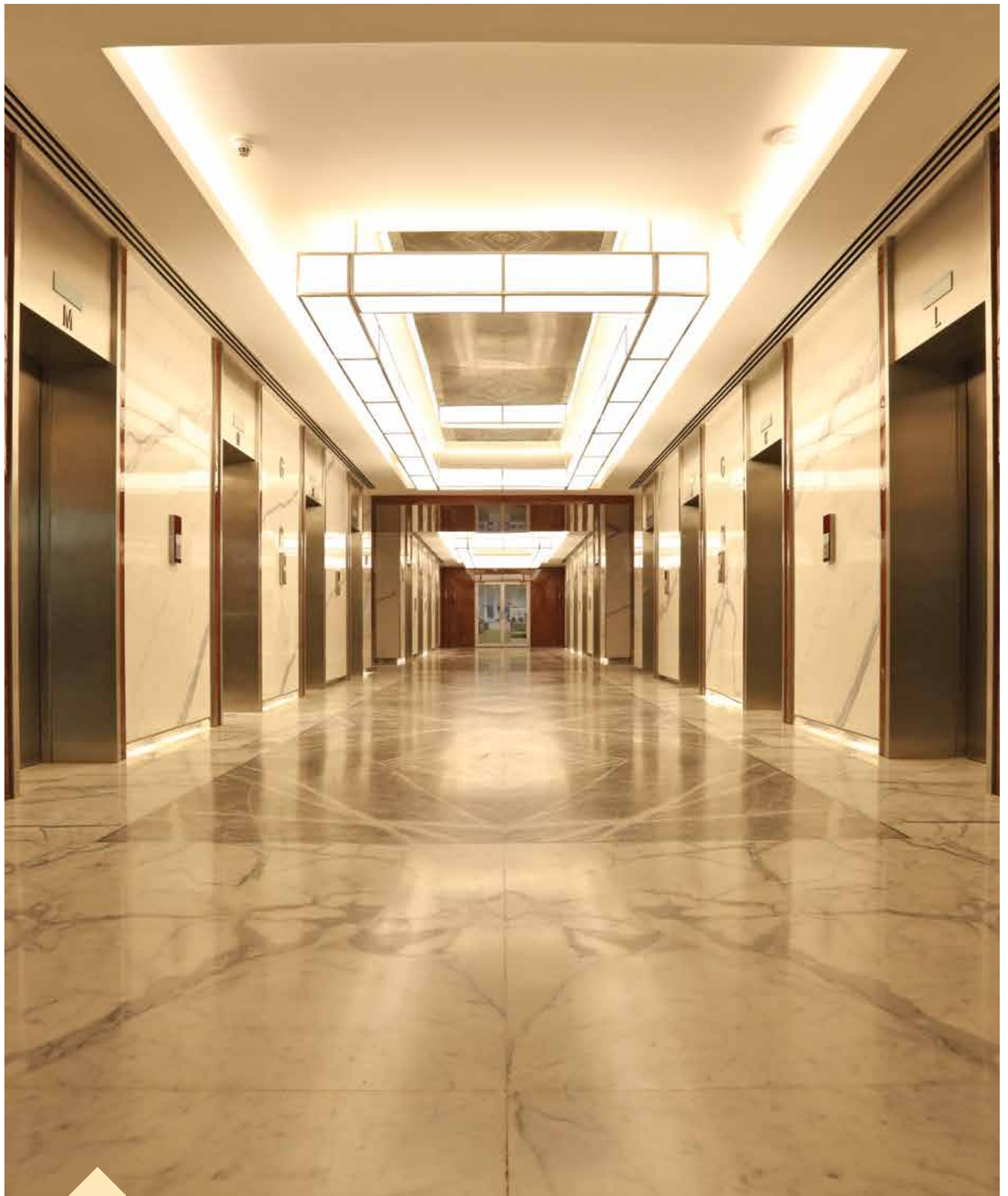
## Ample Parking Space

---

Inspire BKC has enough space not just for the smartest minds, but also for the smartest wheels.



Image for representation purpose



## 16+2 High-speed Elevators

---

The 16 high-speed elevators make sure that  
you never lose time making your way to your workspace.

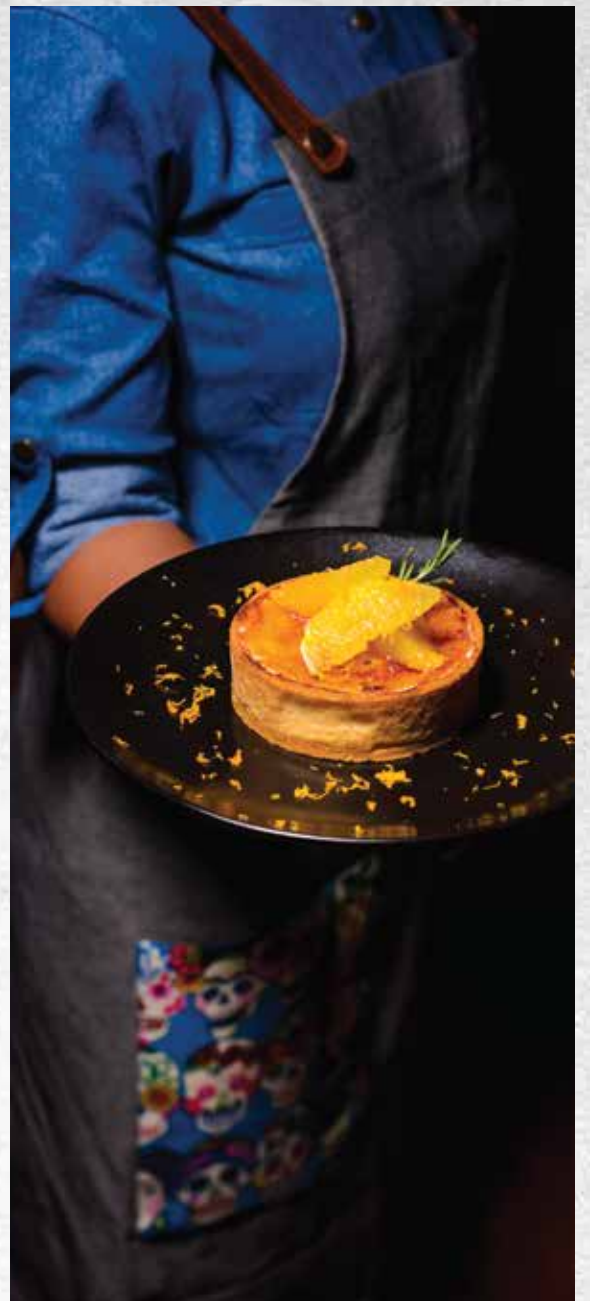
## Exclusive Offices with Terrace Garden

---

At Inspire BKC, a relaxing break is never out of your day's schedule. Whether it's a stroll after lunch or an evening rendezvous with your colleagues, the exclusive terrace garden makes for a great setting.







## Café, Food Court & Multiple Fine Dining Options

Be pampered in more ways than one.

Experience delicious indulgences and titillate your taste-buds  
at the café, food court and fine dining restaurants.

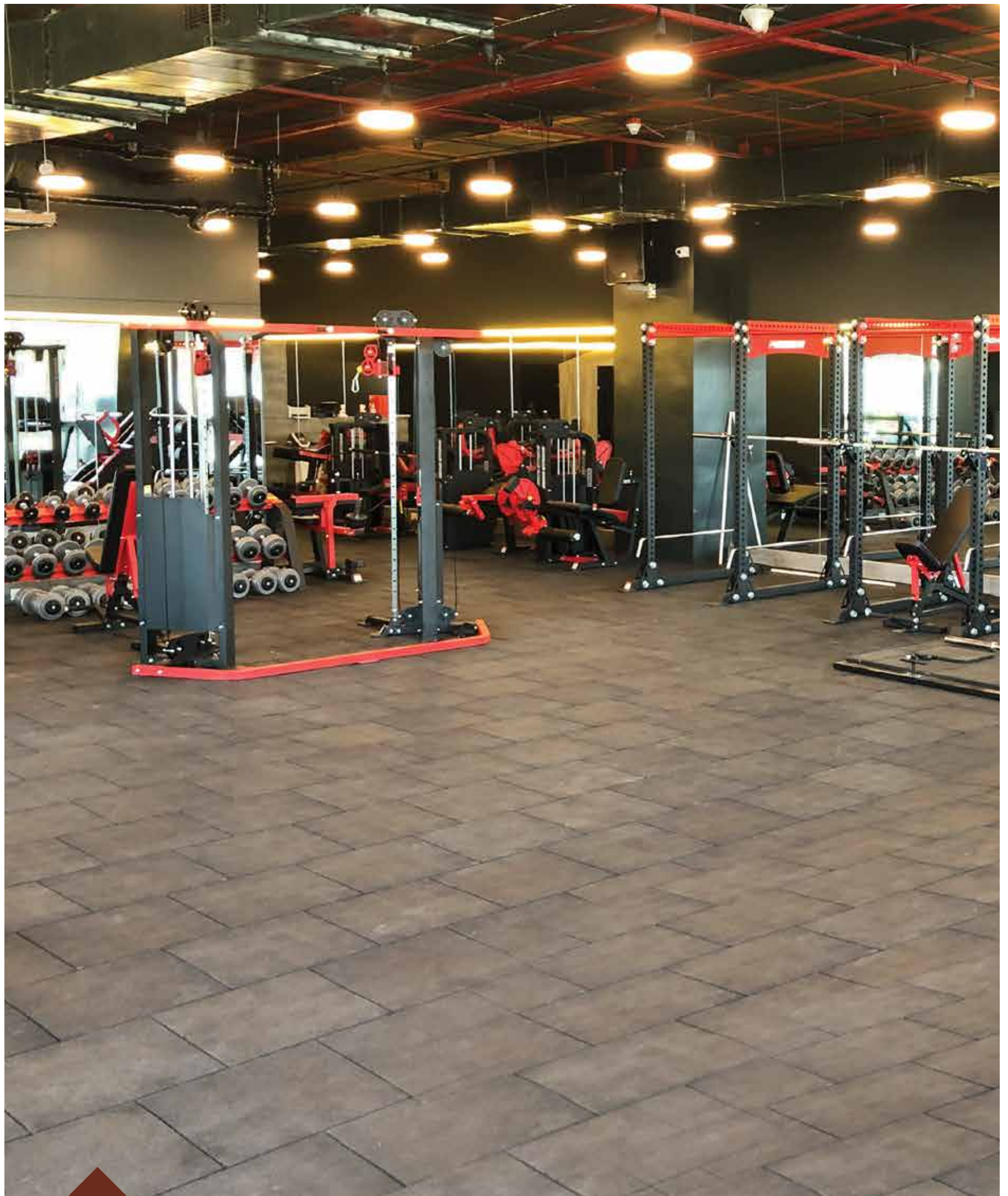
**Multi-Cuisine • Delectable Food Options • Great Ambience**

# Operational Daycare Centre

The thoughtfully-designed and convenient daycare centre enables the workforce to manage both their work and parental responsibilities with ease.

**Thoughtfully-designed • Safe & Reliable • Trained Attendants**





## Operational Fitness Centre

---

Your workspace now can also be your workout space. The well-equipped gym with trained instructors and thoughtfully-structured fitness programs inspires you to take fitness levels to a new high.

## Other Key Features

---



4.2 metres Expansive  
Floor-to-floor Height



Provision for  
Pantry & Washroom



Multi-tier  
Security System



Automated  
Smoke Vents



Break-out Zone



Professional Facility  
Management Services



Centralized  
Air Conditioning



Automated Fire  
Detection & Fire  
Fighting Sprinklers



100% DG  
Power Backup

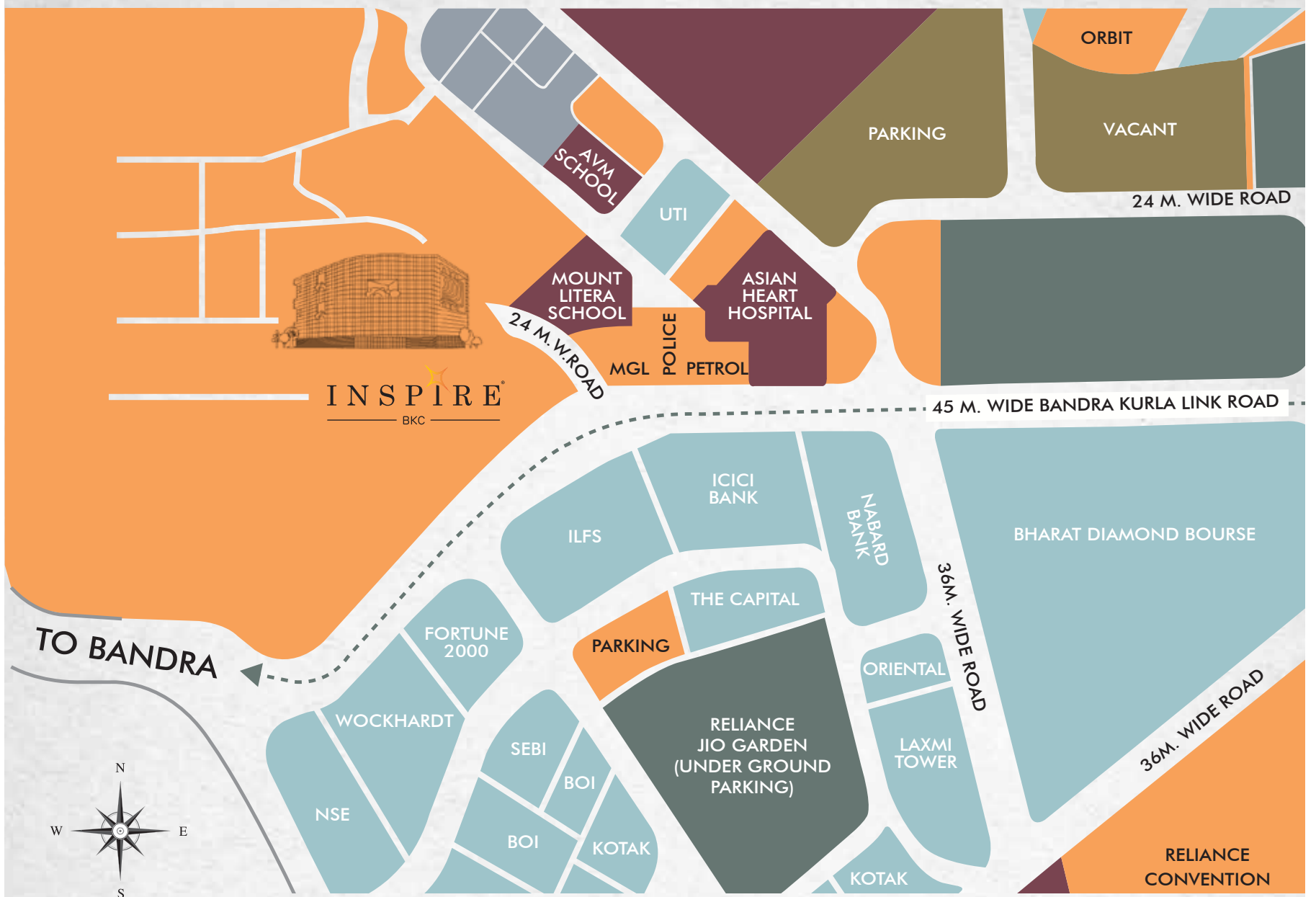


Critical Loading  
for Server Rooms

- 
- Small size – 1200 sq. ft. (111.48 sq.mtrs.) onwards
  - Mid size – 4000 sq. ft. (371.60 sq.mtrs.) onwards
  - Large size – 9000 sq. ft. (836.12 sq.mtrs.) onwards

*Carpet Area as per RERA*

# LOCATION MAP



## LEGEND

- COMMERCIAL SPACES
- INSTITUTIONS
- OTHERS
- VACANT
- JIO GARDEN

Inspire BKC - The Epicentre of Business



Bandra Station - 2.0 km  
Kurla Station - 2.0 km



International Airport - 4.0 km  
Domestic Airport - 2.5 km



Bandra-Worli Sea Link - 2.5 km | Western Exp. Highway - 1.5 km  
Eastern Exp. Highway - 4.0 km | Santacruz-Chembur Link Road - 1.5 km

adani  
Realty

## ONE NAME BEHIND MANY MASTERPIECES

---

Adani Realty is the real-estate arm of India's leading infrastructure and development entity — Adani Group. With its commitment to 'Nation Building' and 'Growth with Goodness', Adani Realty is developing real estate projects in India's most promising destinations, integrating the finest design aesthetics with cutting-edge construction technology.

The company till now has developed close to 13 lakh sq.mtrs. (saleable area) and has close to 7 lakh sq.mtrs. (saleable area) of real estate space under development which includes residential, commercial and social club projects across Ahmedabad, Mumbai, Pune & Gurugram.



# ABOUT ADANI GROUP

Contributing to the growth story of India,  
a quick glance at the Adani Group's performance for the financial year 2018-2019

Coal Traded  
**67.45** MMT

Renewable Power  
**4600** MW

Edible Oil  
**20%** Market Share

Revenue  
**\$13** BN

Coal MDO  
**12.13** MMT

Transmission  
**11347** CKM

Agri Fresh  
**22,636** MT

EBITDA  
**\$3.3** BN

Cargo Handled  
**208** MMT

Solar Manufacturing  
**1.2** GW

Realty  
**16.5** MN SQ.FT

Assets  
**\$31.2** BN

Thermal Power Generation  
**10,440** MW

City Gas Distribution  
**540** MMSCM

Over  
**16,000** Employees

Founded in 1988 | Ports | Diverse interests in Resources | Logistics | Energy  
Agri | Financial Services | Defence and Aerospace | Real Estate  
Electricity | Cargo & Services | Airport & Terminals | Industrial Lands



Largest private thermal power producer in India



Largest port operator in India



Largest integrated infrastructure conglomerate in India



Largest edible oil brand in India



Largest Indian investor in Australia



Largest coal trader in India

**GROWTH WITH GOODNESS FOR A NEW INDIA**

INSPIRE<sup>®</sup>  
— BKC —

This project has been registered via MahaRERA registration number:  
P51900008813 & P51900006101 and is available on the  
website <https://maharera.mahaonline.gov.in> under registered projects.

G Block, BKC Main Road, Bandra Kurla Complex, Next to BKC Police Station, Bandra (E), Mumbai-400 051.

**Toll Free: 1800 120 2852 | Email: [commercial@adanirealty.com](mailto:commercial@adanirealty.com) | Website: [www.inspirebkc.com](http://www.inspirebkc.com)**

**Disclaimer:** This is not an advertisement within the meaning of RERA. This is not an offer, an invitation to offer and/or commitment of any nature. The images include artistic impressions for representation purpose only. This information is presented as indicative general information and no warranty is expressly or impliedly given that the completed development will comply in any degree with such artist's impression or represented images as depicted. All content relating to this project are provided solely for the purpose of information and reference. The brochure is subject to change in case of revised plan and RERA project alteration. We reserve the right to provide certain insertions of detailed layout plan pertaining to the specific unit/building/wing to the recipient. The sale is subject to terms of application form and Agreement for sale. The recipient is deemed to have been notified and agreeable to the same.

adani  
Realty